



**Yumizen**  
C560

# Yumizen C560 Chemistry Analyzer



## Instrument & Reagent Synergy: The Workhorse!

The Yumizen C560 clinical chemistry analyzer paired with high quality POINTE reagents provides you with quick and reliable test results. A standalone floor model analyzer, offering many high-end features typically found only in large integrated systems, the perfect workhorse for midsize laboratories, from your trusted partner in clinical diagnostics, HORIBA Medical.

## Robust Hardware



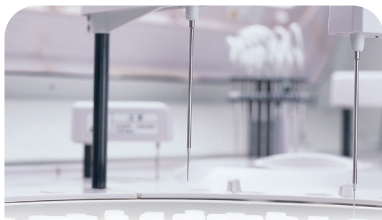
### Enhanced Liquid System

- 8 stage wash station for permanent glass reaction cuvettes
- High pressure interior probe wash, carryover <0,05%



### Low reagent consumption

- Light-Spot flattening technology facilitates lower reaction volume
- 24 hour non-stop refrigeration at 2-10°C
- Minimum reaction volume: 120 µL
- Reagent volume: 10-350 µL
- Cuvette volume: 120-360 µL



### Intelligent Probe System

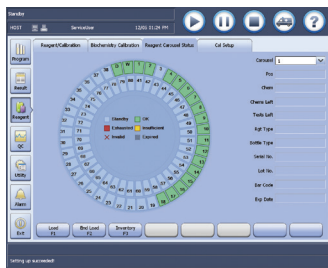
- Supports methods with up to 4 reagents
- Vertical and horizontal collision protection
- Automatic system recovery
- Liquid level detection, clot detection, bubble detection



### Easy to perform maintenance

- Front loaded compartment for easier access to ISE pack wash solution and deionized water
- Easy access for routine maintenance and troubleshooting
- Built in step-by-step maintenance guide

# Advanced software

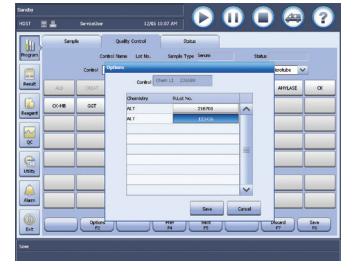


## User-friendly Interface

- Real-time analytical and carousel status
- Monitoring bi-directional LIS interface transmission

## Real-time QC Status Monitoring

- Levey-Jennings chart and QC out-of-range real time alarm
- Customizable periodic QC reminder
- QC testing by reagent lot



This screenshot displays a detailed table of test results. The table has multiple columns, including Patient, Test, Result, and Status. It provides a comprehensive overview of the laboratory's test data.

Patient	Test	Result	Status
12345678	AST	120	OK
12345678	ALT	150	OK
12345678	ALP	180	OK
12345678	LDH	200	OK
12345678	CK-MB	25	OK
12345678	Troponin	0.01	OK
12345678	BUN	10	OK
12345678	Cr	1.2	OK
12345678	Uric Acid	5.0	OK
12345678	Triglycerides	150	OK

## Traceable Test Results

- Historic data recall from reagent/ calibrator/ control archive
- Intuitive software, easy to review historical results

## HORIBA Medical Service and Support

Technical Service and Applications Support teams help avoid downtime and can lower your overall costs.

Experienced applications support is available to train and assist you from installation to validation to reporting results. You can plan and budget in advance with proactive services that reduce your risk.

With scheduled maintenance, you will have confidence that your analyzer will be available when you need patient results.



## Comprehensive POINTE Chemistry Reagent Package.

From a manufacturer with over 40 years of experience designing and manufacturing chemistry reagents, HORIBA POINTE reagents provide clinicians worldwide with actionable patient data.





# Technical Specifications



## System function

Fully automated, discrete, random access, with STAT sample priority capability  
Throughput: 400 photometric tests/hour, up to 240 tests/hour for ISE  
Measuring principles: Absorbance Photometry, Turbidimetry  
Methodology: End-point, Fixed-time, Kinetic, ISE (Optional)  
Single/Dual/Triple/Quadruple reagent chemistries,  
Monochromatic/Bichromatic  
Programming: User defined profiles and calculation

## Sample Handling

Sample tray: 90 positions for primary or secondary tubes and sample cups  
Sample volume: 1.5-50  $\mu\text{L}$ , step by 0.1  $\mu\text{L}$   
Sample probe: liquid level detection, clot detection and collision protection  
Probe cleaning: Interior and exterior automatic probe washing carry-over < 0.05%  
Automatic sample dilution, Pre-dilution and post dilution Dilution with ratio up to 1: 150  
Dilution vessel: Permanent Cuvette

## Internal bar code reader

Sample/ Reagent barcode reading including Codabar, ITF (Interleaved Two of Five), code128, code39, UPC/EAN, Code93  
Bi-directional LIS Interface transmission

## ISE Module (optional)

Optional selection of K<sup>+</sup>, Na<sup>+</sup>, Cl<sup>-</sup>  
Throughput: Up to 240 tests per hour

## Reagent Handling

Reagent tray: 80 positions in refrigerated compartment  
Reagent volume:  
(2-10°C) R1: 45- 350  $\mu\text{L}$ , R2-R4 :10 - 350 $\mu\text{L}$   
Reagent probe:  
Liquid level detection, collision protection and inventory check  
Probe cleaning: interior and exterior automatic probe washing

## Reaction System

Reaction rotor: Rotating tray  
90 cuvettes with automatic washing  
Cuvette: Optical length 5mm  
Reaction volume : 120-360 $\mu\text{L}$   
Operating temperature:37°C  
Temperature fluctuation:  $\pm 0.1^\circ\text{C}$   
Mixingsystem : 2 independent mixers

## Optical System

Light Source: Halogen-tungsten lamp  
Photometer: Reversed optics, grating photometry  
Wavelength: 340nm, 380nm, 412nm, 450nm, 505nm, 546nm, 570nm, 605nm, 660nm, 700nm, 740nm, 800nm  
Absorbance range: 0-3.3Abs (10mm conversion)  
Resolution : 0.0001 Abs

## Control and Calibration

Calibration mode: Linear (one-point, two-point and multi-point), Logit-Log 4P, Logit-Log 5P, Spline, exponential, Polynomial, Parabola  
Control rules: Westgard multi-rule, Levey-Jennings, Cumulative sum check, twin plot

## Operation Unit

Interface: RS-232, Network Port, USB/ parallel port

## Working Conditions

Power Supply: 200-240V, 50/60Hz, 1500V  
or 110-130V, 60Hz, 1500V  
Temperature: 15-30°C  
Humidity: 35-85%  
Water consumption: 20 L/hour, Deionized water  
Dimension: 117cm x 71cm x 114cm (W x D x H)  
Weight: 300 Kg

This product may not be available in your country or region at this time.

Please contact your HORIBA Medical sales representative or distributor for more information.



FRANCE +33 (0)4 67 14 15 15 - ITALY +39 / 06 51 59 22 1 - SPAIN +34 / 91- 353 30 10 - PORTUGAL +351 / 2 14 72 17 70 - UK +44 (0) 1604 542650  
POLAND +48 / 22 6732022 - USA +1 / 949 453 0500 - BRAZIL +55 / 11 2923-5439 - THAILAND +66 / 2 861 59 95 - INDONESIA +62 / 21 3044 8525  
INDIA +91 / 11 4646 5000 - GERMANY AXON LAB AG +49 / 7153 92260 - DISTRIBUTORS NETWORK +33 (0)4 67 14 15 16

HORIBA Medical online : <https://www.horiba.com/medical>

