

Yumizen C240

Yumizen C240 Chemistry Analyzer

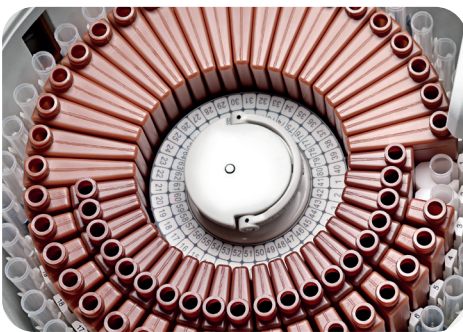


Instrument & Reagent Synergy: Compact and Cost Efficient!

The Yumizen C240 clinical chemistry analyzer paired with high quality POINTE reagents provides you with cost efficient reliable test results. A compact solution with full walk-away capabilities and advance features for small-mid size laboratories from your trusted partner in clinical diagnostics, HORIBA Medical

Yumizen
C240

Robust Hardware



Flexible Reagent and Sample Carousel

- Up to 80 Reagent Positions
- 40 Standard sample positions (up to 80)
- Integrated sample and reagent barcode reader



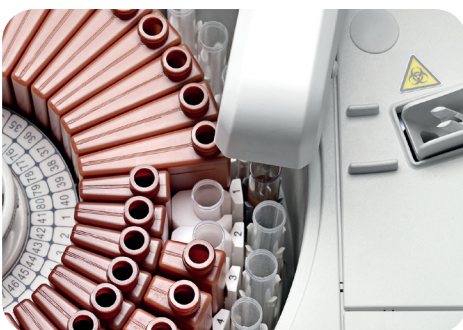
Efficient Resource Usage

- Minimum reaction volume: 100 μ L
- 24 hour non-stop refrigeration at 2-12°C



Easy to perform maintenance

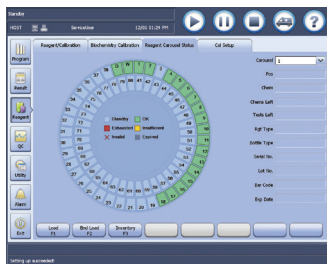
- Lamp located in the front of the analyzer for easy access
- Up to 2000 hours lamp life
- Easy access for routine maintenance and troubleshooting
- Built in step-by-step maintenance guide



Intelligent Probe System

- Vertical collision protection for probes
- Reagent inventory
- Liquid level detection, clot detection

Advanced software

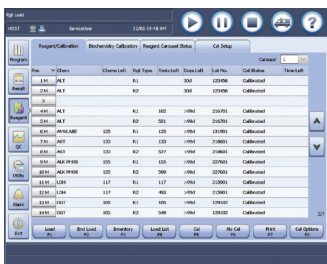
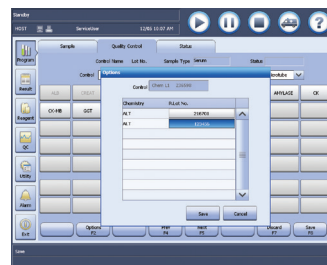


User-friendly Interface

- Real-time analytical and carousel status
- Monitoring bi-directional LIS interface transmission

Automated Functions Ensure Result Quality

- Levey-Jennings chart and QC out-of-range real time alarm
- QC testing by reagent lot
- Auto Rerun, Auto Reflex, Auto QC



Traceable Test Results

- Historic data recall from reagent/ calibrator/ control archive
- Intuitive software, easy to review historical results

HORIBA Medical Service and Support

Technical Service and Applications Support teams help avoid downtime and can lower your overall costs. Experienced applications support is available to train and assist you from installation to validation to reporting results. You can plan and budget in advance with proactive services that reduce your risk. With scheduled maintenance, you will have confidence that your analyzer will be available when you need patient results.



Comprehensive POINTE Chemistry Reagent Package.

From a manufacturer with over 40 years of experience designing and manufacturing chemistry reagents, HORIBA POINTE reagents provide clinicians worldwide with actionable patient data.



System function

Automatic, Discrete, Random Access, Bench-top
STAT sample priority
Throughput: Up to 200 tests/hour, up to 400 tests/hour with ISE Measuring principles: Absorbance photometry, Turbidimetry, Ion Selective Electrode technology
Methodology: End-point, Fixed-time, Kinetic, optional ISE, Single/Dual/ reagent chemistries, monochromatic / bi-chromatic
Original system pack reagent ready to use Close system and open system is optional

Reagent/Sample Handling

Reagent/Sample tray: 80 positions for reagents and 40 positions for samples in 24-hour refrigerated compartment (2~12°C)
Reagent volume: 10~250µl, step by 0.5µl
Sample volume: 2~45l, step by 0.1µl
Reagent/Sample probe: Liquid level detection, vertical collision protection and inventory checking, reagent pre-warming
Probe cleaning: Automatic washing for interior and exterior
Carry over < 0.05%
Automatic sample dilution: Pre-dilution and post-dilution

Internal bar code reader (optional)

Used for sample and reagent programming
Be applicable to various bar code systems of Codabar,ITF (Interleaved Two of Five), code128, code39, UPC/EAN, Code93
Capable to communicate with LIS in bi-directional mode

Reaction System:

Reaction rotor: Rotating tray, containing 40 cuvettes
Cuvette: Reusable, optical length 5mm
Reaction volume: 100~360 uL
Operating temperature: 37°C
Temperature fluctuation: ± 0.1°C
Cuvette washing: Washing station with pre-warmed detergent and water

ISE Module (optional)

Measuring K+, Na+, Cl-
Mixing Unit
Independent mixing bar

Optical System

Light Source: Halogen-tungsten lamp
Wavelength: 8 wavelengths, 340nm, 405nm, 450nm, 510nm, 546nm, 578nm, 630nm, 670nm
Absorption range: 0~4.0 Abs (10mm conversion), resolution 0.0001Abs
Stray Light 5.6Abs

Control and Calibration

Calibration modes: Linear (one point, two points and multi-points), Logit-Log 4P, Logit-Log 5P, spline, exponential, polynomial, parabola
Control Rules: X-R, L-J, Westgard multi-rule, Cumulative sum check, twin plot

Operation Unit

Operation system: Windows 10
Interface: RS-232

Working Conditions

Power Supply: 200~240V, 50/60Hz, 1000VA or 100~130V, 60Hz, 1000VA
Dimension: 690 mm (length) x580 mm (depth) x595 mm (height)
Weight: 79 kg
Water Consumption: 4 L/H

This product may not be available in your country or region at this time. Please contact your HORIBA Medical sales representative or distributor for more information.



FRANCE +33 (0)4 67 14 15 15 - ITALY +39 / 06 51 59 22 1 - SPAIN +34 / 91- 353 30 10 - PORTUGAL +351 / 2 14 72 17 70 - UK +44 (0) 1604 542650
POLAND +48 / 22 6732022 - USA +1 / 949 453 0500 - BRAZIL +55 / 11 2923-5439 - THAILAND +66 / 2 861 59 95 - IINDONESIA +62 / 21 3044 8525
INDIA +91 / 11 4646 5000 - GERMANY AXON LAB AG +49 / 7153 92260 - DISTRIBUTORS NETWORK +33 (0)4 67 14 15 16

HORIBA Medical online : <https://www.horiba.com/medical>

