

Distribuido por:



Tel. +34 854 53 63 74
satcliente@lrdiagnostico.com
www.lrdiagnostico.com

new art laboratories



Microcuvette
offers 2 openings
for sample
application

NADAL[®] Hb/Hct plus Analyser

Simple determination of Hb- and Hct levels in your practice

Rapid Tests

Laboratory Diagnostics

Laboratory Services

Consultation & Service

Point-of-care Hb- and Hct Analysis

Determine Hb levels directly in your practice!

Haemoglobin level (Hb)

Elevated haemoglobin levels indicate a decrease in the volume of liquid blood, or diseases in which too many red blood cells are formed in the bone marrow (myeloproliferative diseases). Conversely, low haemoglobin levels indicate a lack of red blood cells and thus anaemia. Sometimes, low Hb values can also mean that the red blood cells contain too little haemoglobin, or that the liquid part of the blood is excessive due to overhydration in the event of kidney diseases, for example. Whatever the cause, it is essential for a diagnosis to determine the number of red blood cells in the blood - Hb levels are to be used for this purpose. The **NADAL® Hb/Hct plus Analyser** determines haemoglobin levels simply and reliably, and can also measure the blood's capacity to transport oxygen. The analyser also automatically displays haematocrit values.

The advantages of rapid, point-of-care diagnostics

Conventional laboratory diagnostics - along with their drawn-out processes and waiting times - are increasingly being replaced with diagnostics which utilise point-of-care solutions, which enable the evaluation of test results on-site, in laboratory quality and in the presence of the patient. With the help of the **NADAL® Hb/Hct plus Analyser**, you can determine Hb levels instantly within your practice. In many cases, this will mean that decisions regarding treatment can be reached more quickly. You can ascertain the success of current treatment directly and make adjustments during the patient consultation if necessary. This saves both you and the patient time, which is not only more economical but also has potential benefits with regard to doctor-patient relationships and the quality of the treatment.



Source:

- 1) <https://www.leben-mit-transfusionen.de/eiseneueberladung/diagnostik/haemoglobin-was-der-blutwert-aussagt>
- 2) <https://www.aerzteblatt.de/archiv/77949/Patientennahe-Labordiagnostik-in-Klinik-und-Praxis>



Blood analysis in laboratory quality

The NADAL® Hb/Hct plus Analyser - Simple, fast, portable and reliable

With the help of the **NADAL® Hb/Hct plus Analysers** you can carry out your daily work more efficiently, reducing the demand on time and staffing. Your patients will benefit from the quicker commencement of treatment, and you will save time by bypassing the wait for lab results, allowing you to avoid time-consuming telephone calls and follow-up consultations with the patient.

Fast and simple ✓

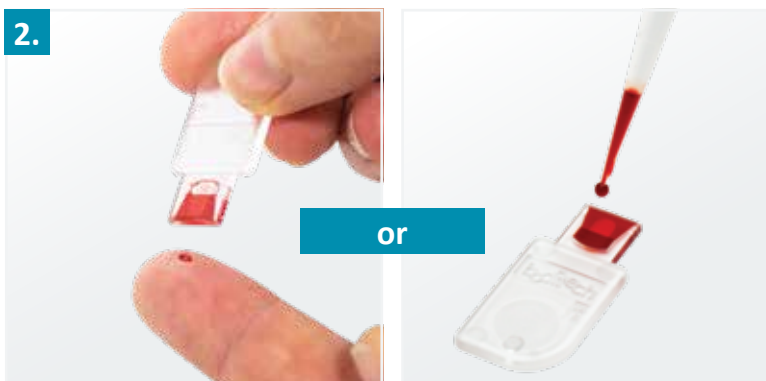
- Clear operating instructions on colour display screen
- Blood sample collection via fingerstick possible
- Only 15 µl blood required
- Evaluation within 3 seconds
- Results in just 4 steps
- Pipetting into cuvettes possible
- Data export via USB

Instructions for using the device

Test procedure requiring just a few steps:



Open the microcuvette holder manually.



Collect a fingerstick blood sample, or pipette blood onto the microcuvette.



Place the microcuvette with the sample into the holder and close it fully. The test will begin automatically.



The haemoglobin (Hb) and haematocrit (Hct) levels will be displayed within 3 seconds.

Portable ✓

- Battery operated, allowing flexible implementation
- Small, practical and weighs only 215 g

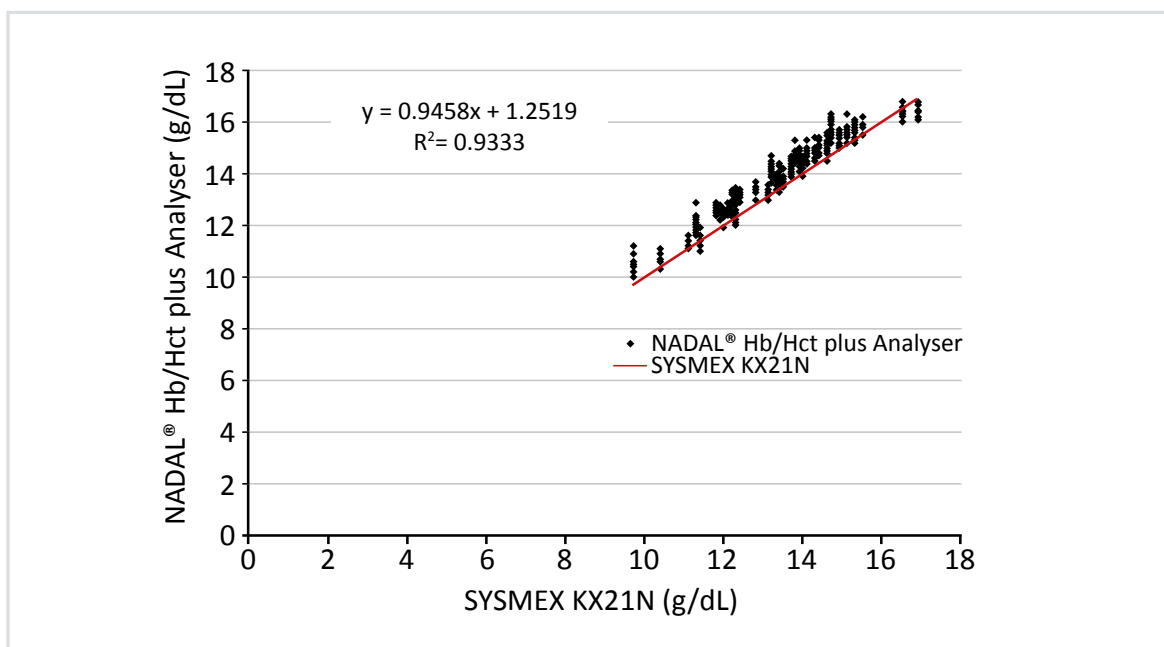


Reliable ✓

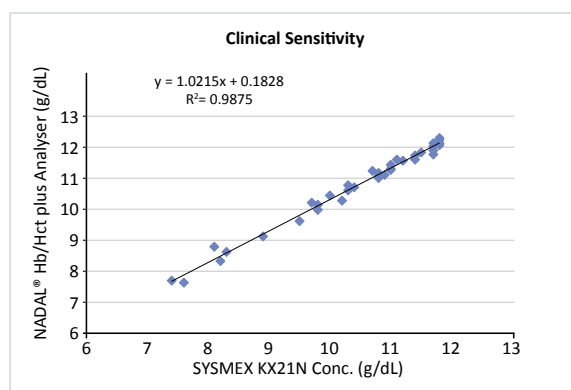
- Microcuvette shelf life of up to 24 months
- No need for costly laboratory blood tests
- Laboratory quality without the waiting times: $R^2 = 0.9875$
- CE-certified

Method comparison

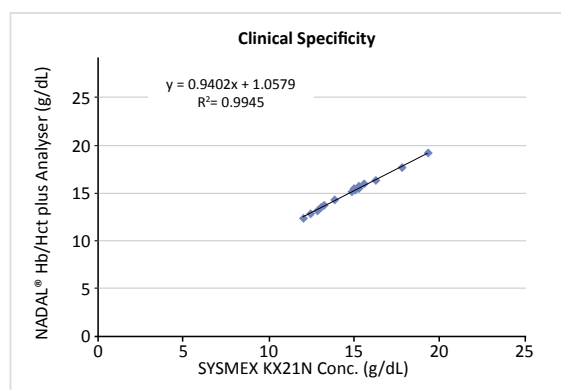
Comparison of the NADAL[®] Hb/Hct plus Analyser with Sysmex KX21N



The NADAL[®] Hb/Hct plus Analyser demonstrates good correlation with the Sysmex KX21, with a correlation coefficient of 0.9333.



As the results show, all tested samples were almost consistent with the expected haemoglobin concentration. The clinical sensitivity of the NADAL[®] Hb/Hct plus Analyser is 95%. The correlation coefficient (R^2) is 0.9875.



As the results show, all tested samples were almost consistent with the expected haemoglobin concentration. The clinical specificity of the NADAL[®] Hb/Hct plus Analyser is >99.99 %. The correlation coefficient (R^2) is 0.9945.





A little more about the NADAL[®] Hb/Hct plus Analyser

Everything you need to know - in a nutshell

We also offer useful accessories for the NADAL[®] Hb/Hct plus Analyser to make your everyday work easier. For example, the thermal printer quickly and easily prints out results obtained using the NADAL[®] Hb/Hct plus Analyser. Further information on this device, as well as its accessories, can be found in the following overview.

Product overview

NADAL® Hb/Hct plus Analyser		
	Analyser Content: 1 measurement device, 4 batteries, 1 user manual	Product code 1320100
NADAL® Hb/Hct Thermoprinter		
	Thermal printer for use with the Hb/Hct plus Analyser	Product code 980120
NADAL® Hb/Hct plus Microcuvettes		
200 microcuvettes, 1 code chip, 1 user manual		Product code 1320101
NADAL® Hb/Hct plus Controls		
3 bottles per pack: 1x Control Level I (1.0 mL), 1x Control Level II (1.0 mL), 1x Control Level III (1.0 mL)		Product code 1320103
NADAL® Hb/Hct plus Calibrator		
1 calibrator, 1 RFID chip, 1 user manual		Product code 1320104
NADAL® Hb/Hct plus USB data cable		
Cable for data export via USB as well as powering the device		Product code 1320105

Technical specifications

NADAL® Hb/Hct plus Analyser	
Measurement range	0.0 - 27.0 g/dL; 0 - 270 g/L; 0.0 - 16.8 mmol/L
Test time (processing time)	3 seconds
Sample volume	15 µL
Sample	Capillary blood or venous blood
Dimensions	106.5 x 151.0 x 38.5 mm (W x L x H)
Weight	(without battery) 215 ± 3 g
Power source	Battery operated (4 x AA batteries)
Readout	Built-in display screen, printer (optional)
Temperature	15-35 °C
Humidity	max. 75 %

