

Sample Distribution Module

Sample loading/offloading

Support 2 sample baskets in use simultaneously;
up to 300 samples can be loaded or offloaded each time,
buffer area contains 290 sample positions

Loading Design

Continuous sample loading and offloading; prior delivery for
STAT samples

Distribution Speed

Up to 100 racks/hour

Sample tube

Height: 68.5-100mm Diameter: 12-16mm

Cuvette

φ14X25mm, 0.5ml & 14X25mm, 2ml, or φ12X37mm, 2ml

Chemistry Module

Throughput 2000 tests/hour

Measuring Principles

Colorimetry, Turbidimetry and ISE method

Methodology End-point, Fix-time, Kinetic, optional ISE

Reagent Carousel 140 positions, refrigerated compartment

Onboard chemistries Chemistry: 67; ISE: 3; Serum Index: 3

Reagent Volume 10-200μl, with increment of 0.5μl

Sample Carousel 140 sample positions

Sample Volume Chemistry: 1.5-25μl, with increment of 0.1μl;
ISE: 22μl

Reaction Volume 80μl-200μl

Clot Detection Yes

Immunology Module

Throughput Up to 480 tests/hour

Principle Chemiluminescence Immunoassay based on
enhanced ALP-AMPPD method

Reagent Disk 36 reagent positions, continuous loading,
real-time mixing for magnetic particles

Reagents Volume Immunology reagent: 20-135μl, with
increment of 1μl

Sample diluent 10-200μl, with increment of 1μl

Reagent pack 50 tests/pack, 100 tests/pack

Sample Volume 10-200μl, with increment of 1μl

Sample/Reagent Probe Steel Probe, liquid level detection,
clot detection, collision protection

Dimension

SDM 800mm*1165mm*930mm (W*D*H)

Chemistry Module 1580mm*1165mm*1445mm (W*D*H)

Immunology Module 1445mm*1165mm*1145mm (W*D*H)

Weight

Total Weight 1380 kg

Power

Total Power 7300VA

SAL 9000

Serum Automation Modular System



SAL 9000


New Generation of Serum Analysis Line


Mindray aims to provide one total solution for clinical lab to make In-vitro Diagnostics more automatic and intelligent. This year, with years of investment and research, Mindray launch the new generation of Serum Automation Line, SAL 9000.


SAL 9000 Automatic Modular System delivers high throughput by integrating Mindray's CL-6000i Chemiluminescence Immunoassay System, BS-2000 Chemistry Modular System and new sample processing module SPL 2000. With patented automatic serum analysis design, SAL 9000 not only helps you optimize the management of lab space and manpower, it also offers highly reliable test results.




Promote the zooming of laboratory efficiency

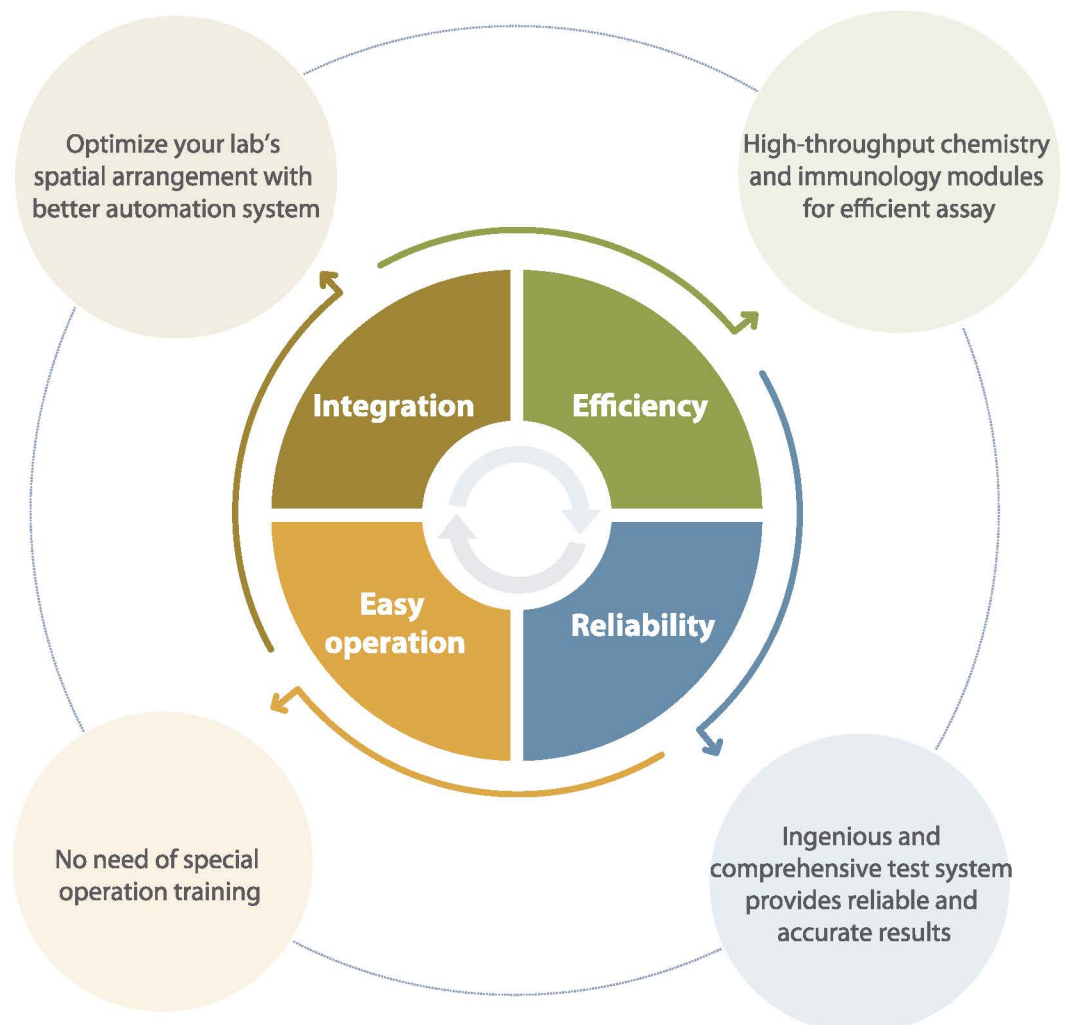
- 

Integrated laboratory space
- 

High-efficiency chemistry & immunoassay modules
- 

Reliable and authentic test results
- 

Smart and easy-operating system



Intelligent Modules Integration

BS-2000 Chemistry Module

CL-6000i Immunology Module

SPL Sample Processing Module



Enhanced carry-over prevention program for high sensitive tests

Triple lanes design with designate STAT passing lane

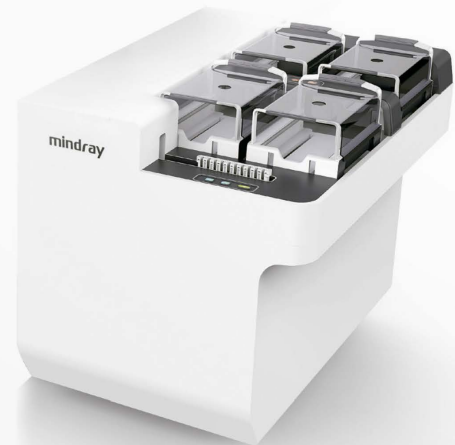
Internal delivery buffer area with up to 290 sample positions

Patented Sample Rack Basket design to provide safe and easy load/offload

Specialized STAT sample delivery with 32-second response

Powerful SPL Sample Distribution Module

- Patented double-layer & basket delivery design, up to 600 sample positions
- Continuously loading of single or multiple samples
- Independent STAT lane, 32s quick response
- Intelligent samples distribution for maximum module efficiency



CL-6000i Immunology Model

- High throughput of 480tests/hour, first result in 17 minutes
- 36 reagents positions with continuously loading/offloading
- Uniquely designed buffer disk to reduce cuvette jam
- Fully automated maintenance, lighten the workload
- Precise 4-phase magnetic separation



BS-2000 Chemistry Module

- Constant test speed of 2000T/H
- 140 reagent positions with continuously loading/offloading
- Refrigerated sample carousel, 140 sample positions
- Intelligent real-time monitoring system
- Complete traceability detecting system



Integrated Serum Analysis Line

- Simplify laboratory flow
- Reduce turn-around time
- Improve laboratory efficiency and optimize manpower allocation
- Reduce manual error rate



Fit the clinical usage

- Patented design of sample basket to ensure safe transportation
- Up to 300 samples can be loaded and offloaded simultaneously



- STAT sample delivery, 32s quick response

- Flexible sample delivery, no limitation of sample amount

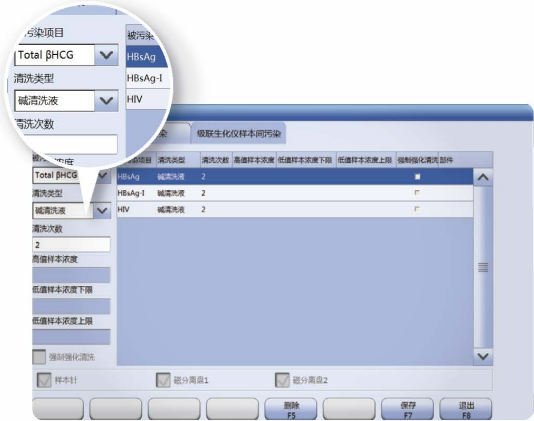


Reliable Test Result Based on Unique Design

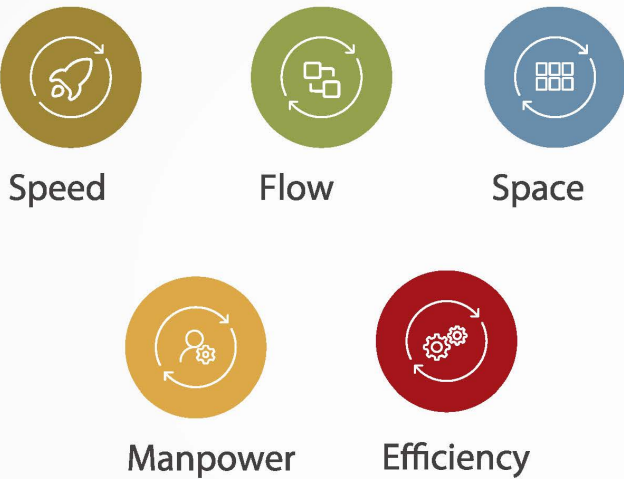
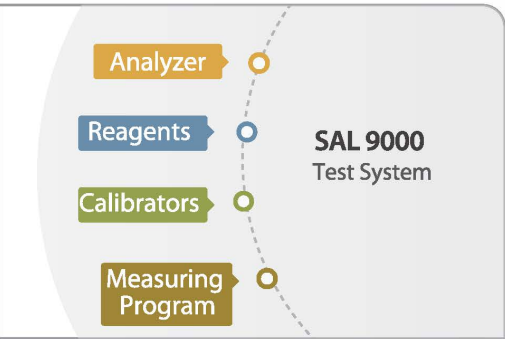
- Wiper washing technology, enhance efficiency and minimize carryover



- Priority for high sensitive tests, reduce cross contamination



- Comprehensive test system, provide accurate result



Before and After the Installation of SAL 9000



Flexible Combination

SAL 9000 provides serum analysis with ultra high throughput

By integrating BS-2000 and CL-6000i, Mindray offers what you want

Update to SAL 9000

For current BS-2000 or CL-6000i customer, directly upgrading to SAL 9000 is available

SAL Family

Mindray provides SAL 6000 and SAL 9000, covers the daily need of different customers



Test Menu

Hepatic Panel Chemistry ALT AST GGT ALP TP ALB BIL-T BIL-D TBA CHE PA AFU Immunology HBsAg Anti-HBs HBeAg Anti-HBe Anti-HBc Anti-HCV HBeAg quantitative* Anti-HBc IgM* PIIINP CIV LN HA	Electrolyte Chemistry K Na Cl Ca Mg P Fe Fertility Immunology Total β -HCG FSH LH Prolactin E2 E3 TESTO PROG Free testosterone* 17-OH PROG* SHBG* AMH*	Anemia Panel Chemistry FER UIBC TRF G6PD Immunology Ferritin Vitamin B12 Folate RBC Folate Bone Metabolic Immunology Intact PTH Calcitonin Vitamin D total	Diabetes Chemistry Glu HbA1C β -HB FUN Immunology Insulin C-peptide Thyroid Immunology FT3 FT4 T3 T4 TSH Anti-TG Anti-TPO Tg rT3 TRAB*	Inflammation Panel Chemistry RF ASO CRP C3 C4 IgA IgG IgM IgE Immunology PCT Others Chemistry AMY LIP ADA ACE Immunology HIV Combo Anti-TP (Syphilis) Angiotension I* Angiotension II* PAPP-A* Free β -HCG* hGH* IGF-1*
Renal Panel Chemistry UREA UA Crea CO2 Cys-C MALB RBP β 2-MG TPUC Immunology ACTH DHEA-S Cortisol	Lipid & Cardiac Panel Chemistry TG TC LDL-C HDL-C ApoA1 ApoB Lp(a) HS-CRP LDH α -HBDH CK CK-MB MYO D-Dimer Immunology CK-MB Myoglobin Troponin I BNP Renin Aldosterone	Tumor Marker Chemistry AFU Immunology CEA AFP CA125 CA15-3 CA19-9 FPSA TPSA NSE CYFRA 21-1 CA72-4 PG I PG II SCCA HE4 ProGRP CA50 CA242	ToRCH Immunology Toxo IgG* Toxo IgM* Rubella IgG* Rubella IgM* CMV IgG* CMV IgM* HSV-1/2 IgG* HSV-1/2 IgM* HSV-1 IgG* HSV-1 IgM*	

* Under development

